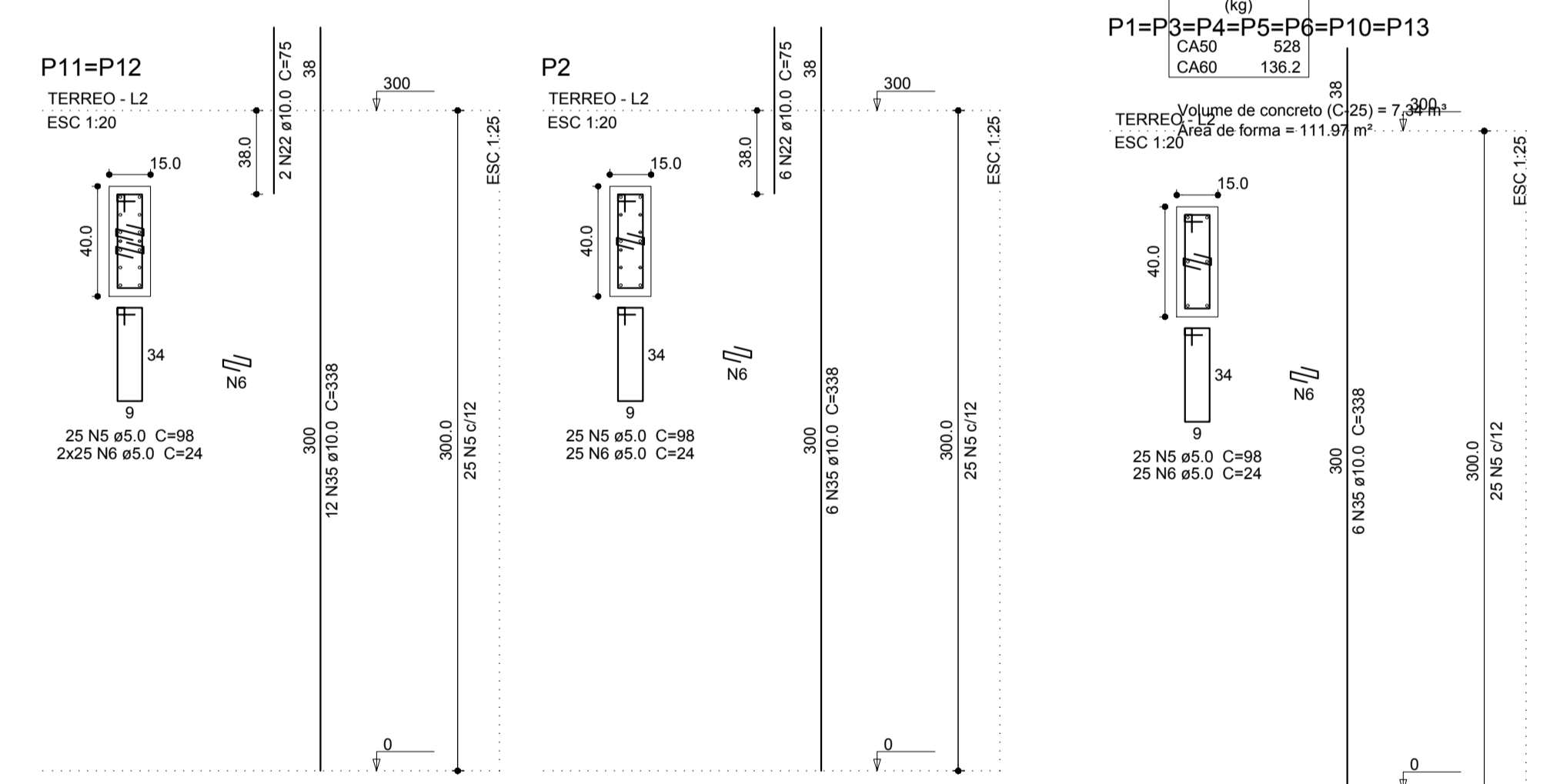
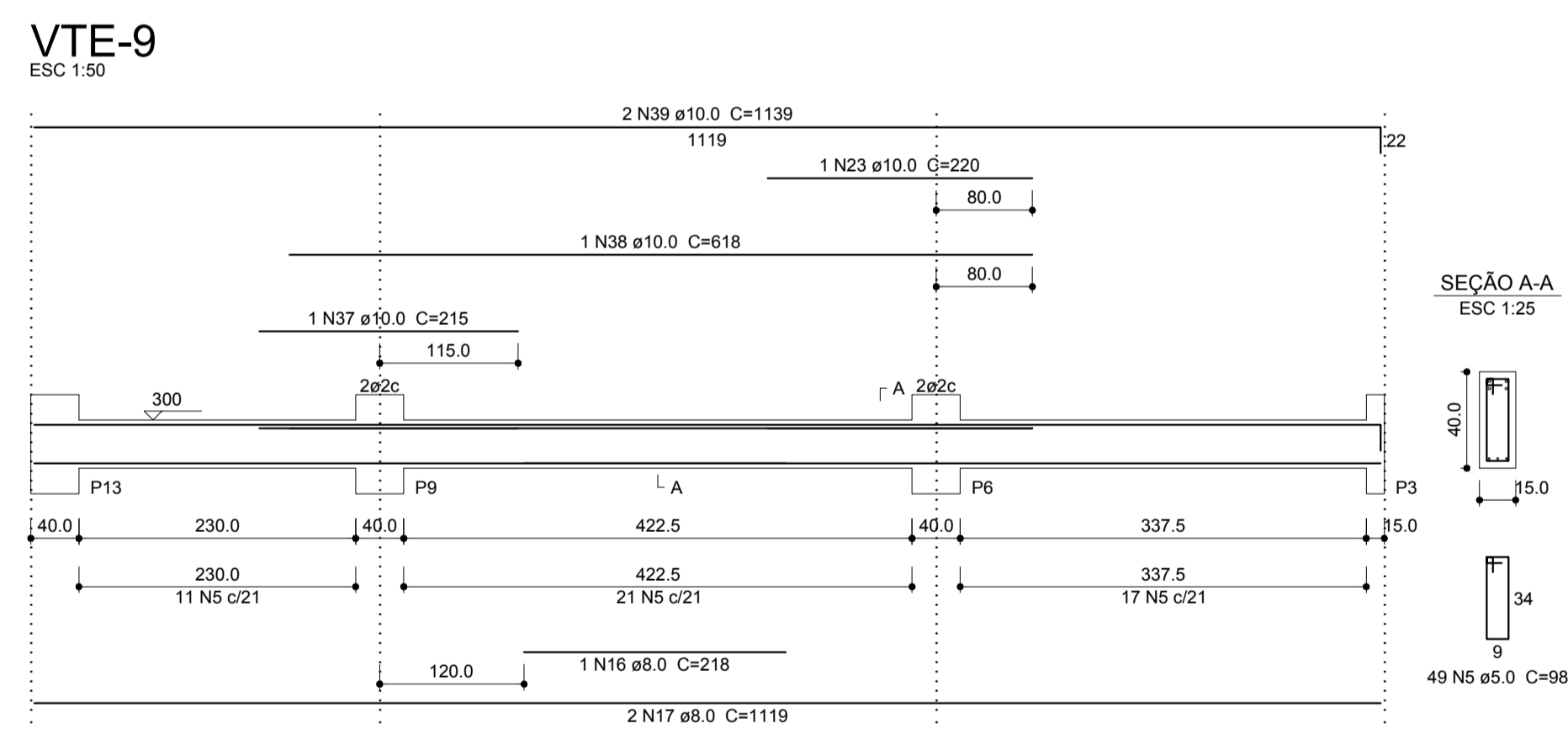
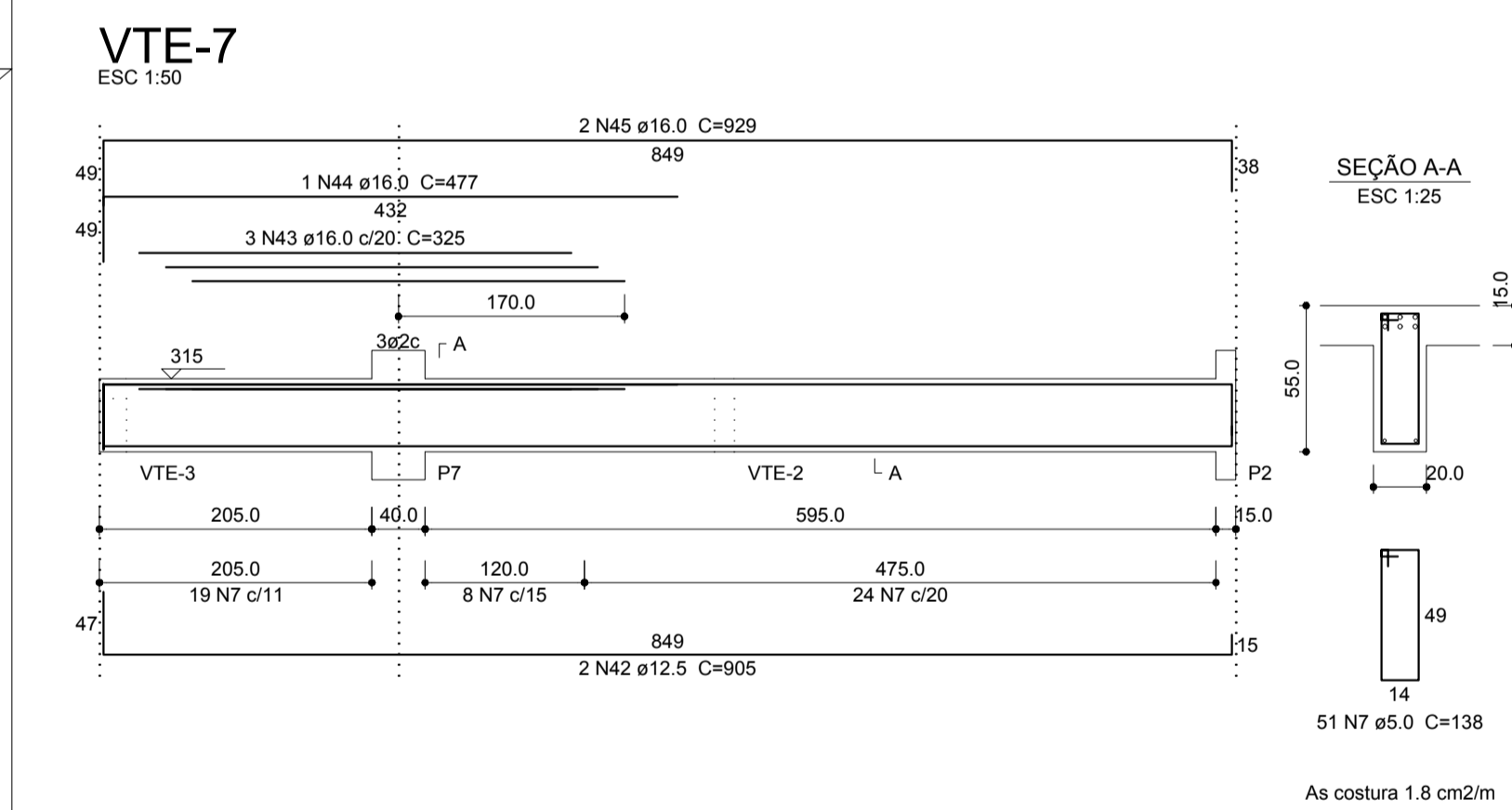
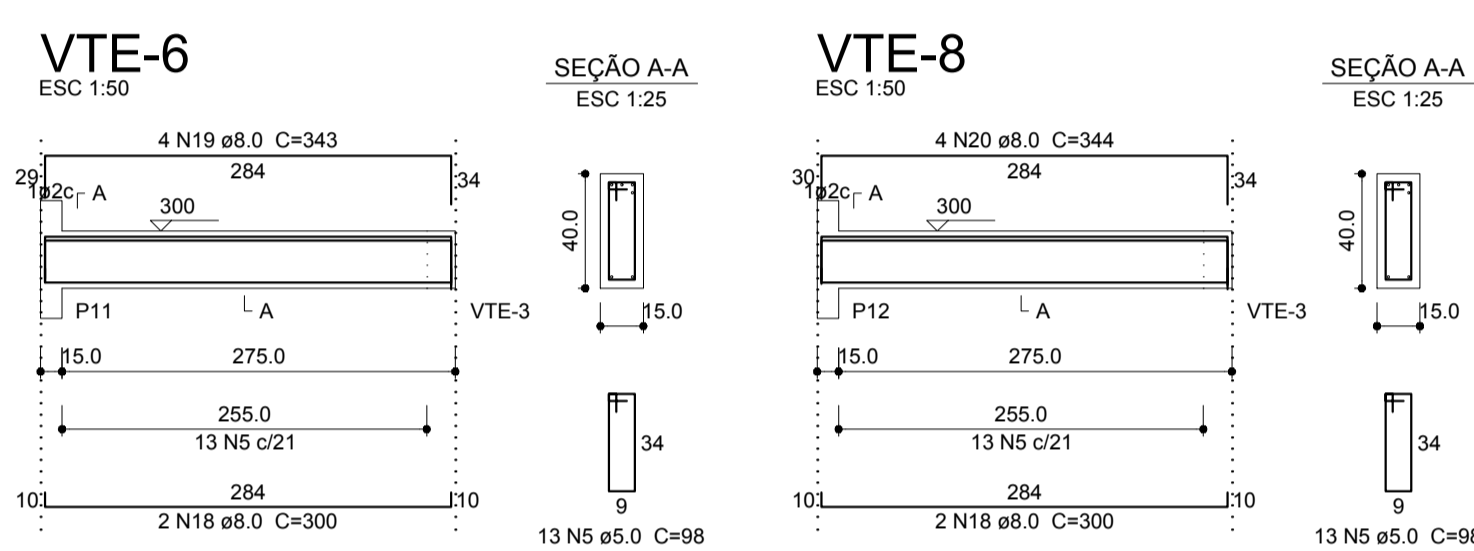
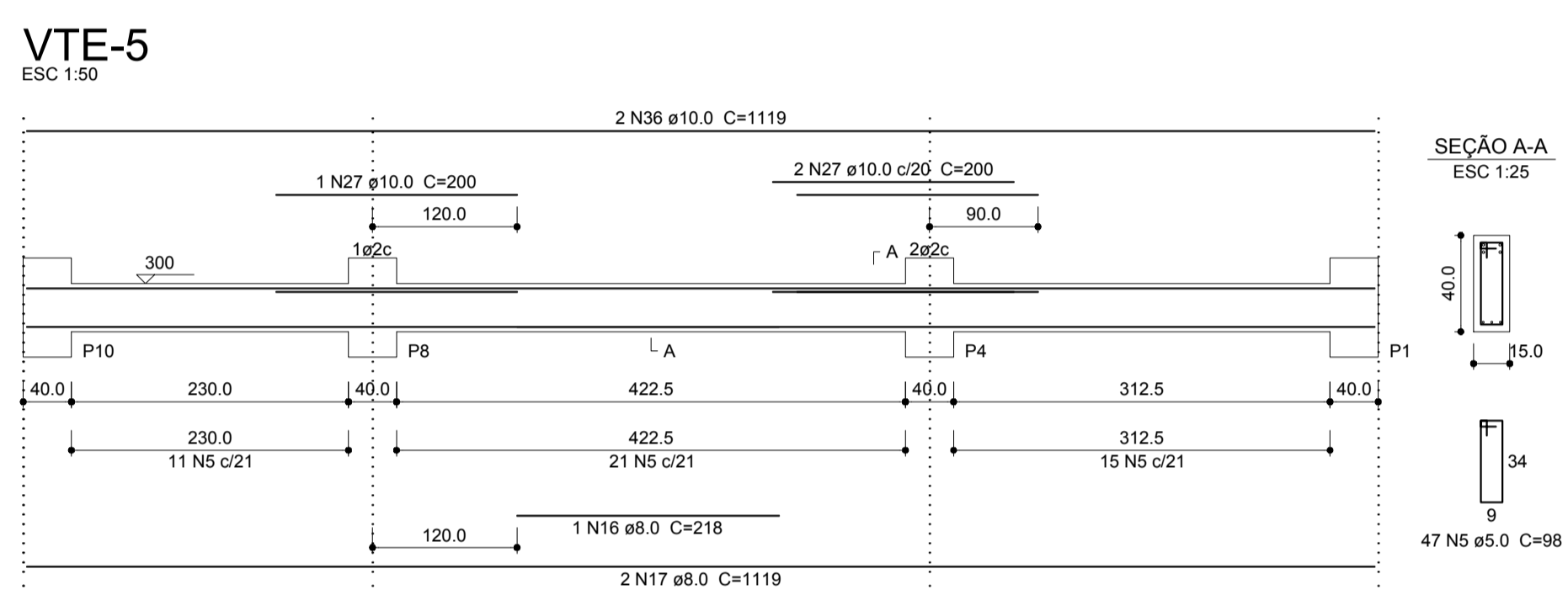
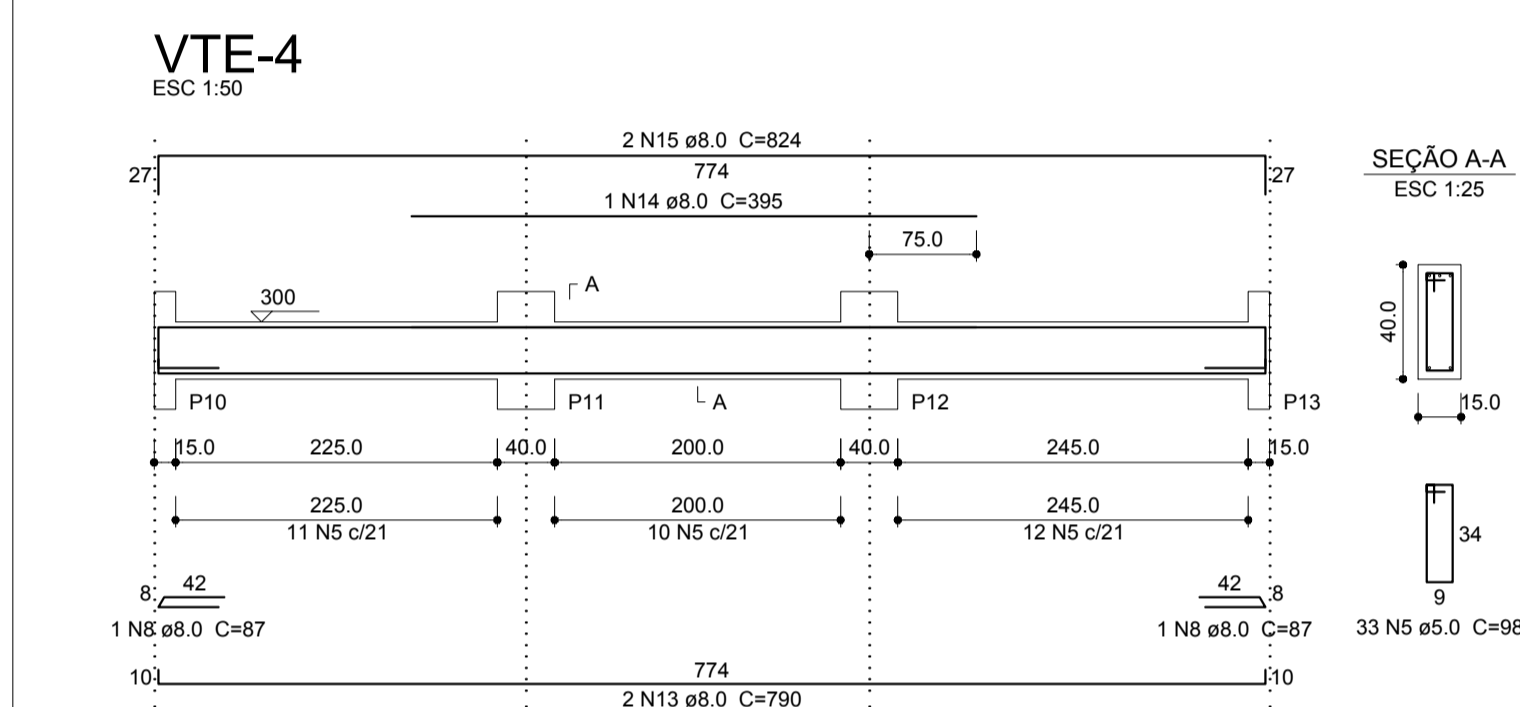


**Relação do aço**

BAUDRAME:	P2	P7
TERREO:	7xP1	P2
	P8	P8
	P9	2xP11
	VTE-1	VTE-2
	VTE-3	VTE-4
	VTE-5	VTE-6
	VTE-7	VTE-8
	VTE-9	VTE-9

AÇO	N	DIAM (mm)	QUANT	C.UNIT (cm)	C.TOTAL (cm)
CA60	1	5.0	106	108	11448
	2	5.0	60	29	1740
	3	5.0	8	118	944
	4	5.0	16	34	544
	5	5.0	500	98	49000
	6	5.0	400	24	9600
	7	5.0	51	138	7038
	8	8.0	3	87	261
	9	8.0	1	240	240
	10	8.0	4	782	3128
	11	8.0	1	215	215
	12	8.0	2	355	710
	13	8.0	2	790	1580
	14	8.0	1	395	395
	15	8.0	2	824	1648
	16	8.0	2	218	436
	17	8.0	4	1119	4476
	18	8.0	4	300	1200
	19	8.0	4	343	1372
	20	8.0	4	344	1376
	21	10.0	6	VAR	VAR
	22	10.0	17	75	1275
	23	10.0	2	220	440
	24	10.0	1	107	107
	25	10.0	1	527	527
	26	10.0	2	794	1588
	27	10.0	4	200	800
	28	10.0	2	821	1642
	29	10.0	1	210	210
	30	10.0	2	495	990
	31	10.0	1	150	150
	32	10.0	2	170	340
	33	10.0	1	195	195
	34	10.0	2	841	1682
	35	10.0	104	338	35152
	36	10.0	2	1119	2238
	37	10.0	1	215	215
	38	10.0	1	618	618
	39	10.0	2	1139	2278
	40	12.5	9	VAR	VAR
	41	12.5	3	VAR	VAR
	42	12.5	2	905	1810
	43	16.0	3	325	975
	44	16.0	1	477	477
	45	16.0	2	929	1858

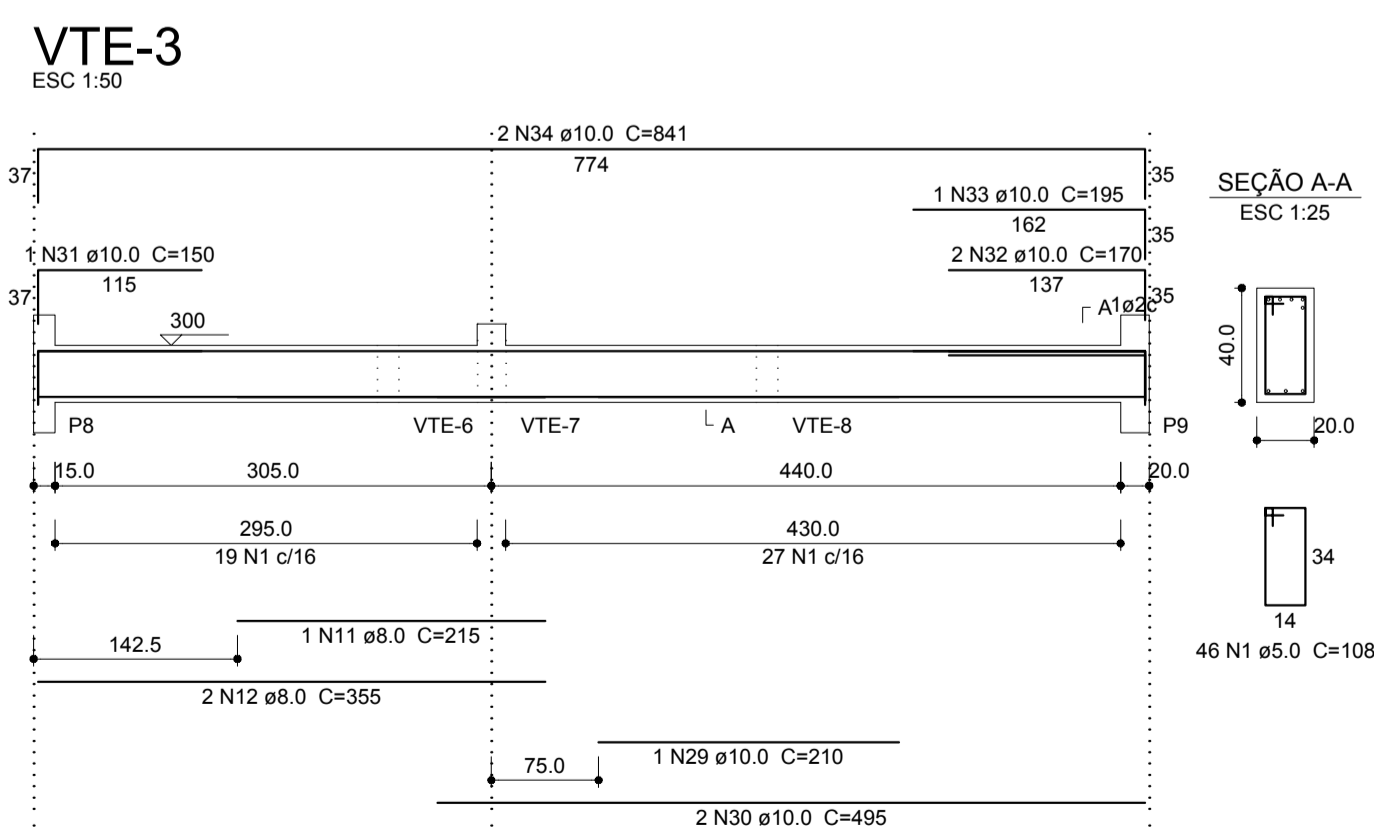
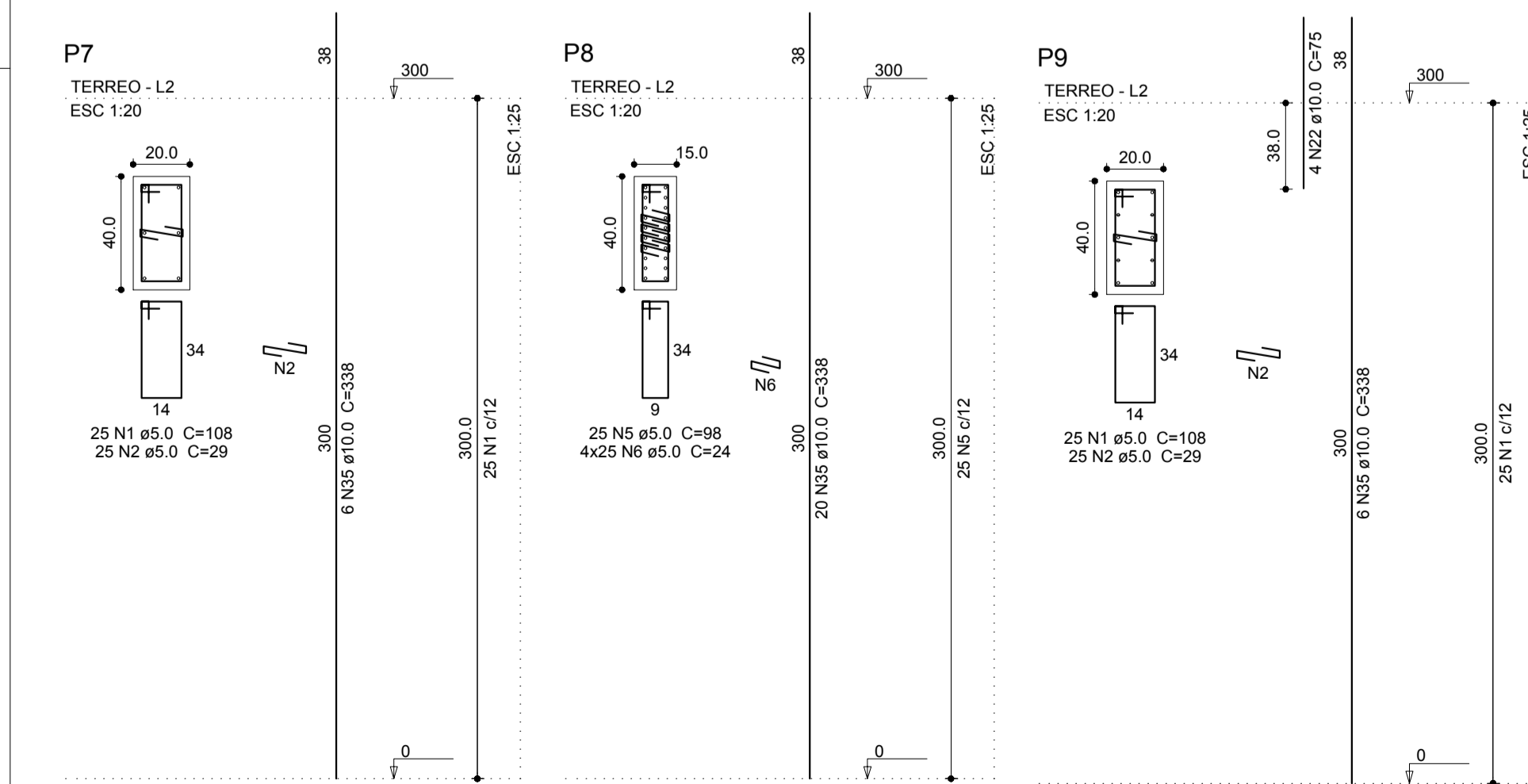


**Resumo do aço**

AÇO	DIAM (mm)	C.TOTAL (m)	PESO + 10% (kg)
CA50	8.0	170.4	73.9
	10.0	514.8	349.1
	12.5	44.9	47.5
	16.0	33.1	57.5
CA60	5.0	803.2	136.2

**PESO TOTAL (kg)**

CA50 528  
CA60 136.2



# PROJETO ESTRUTURAL

## DETALHAMENTO

Endereço: Av. Sidônio Otoni, 697  
Jardim Iracema - Teófilo Otoni-MG  
Proprietário: 15ª Cia PM Ind MAT  
Polícia Militar de Minas Gerais  
CNPJ.: 16.695.025/0001-97

Escala: Indicadas  
Desenho: Outubro 2017  
Revisão: Out. 2017

PILAR MATERIAL DE CONSTRUÇÃO  
E LOCAÇÃO DE MÁQUINAS  
EIRELI-ME  
KAYCK ALVES MOREIRA  
ENG. CIVIL CREA-MG 214.465/LP  
Contato: (33) 3521-2709

Desenho: 03  
Folha: 03/04  
Data: 28/10/2017