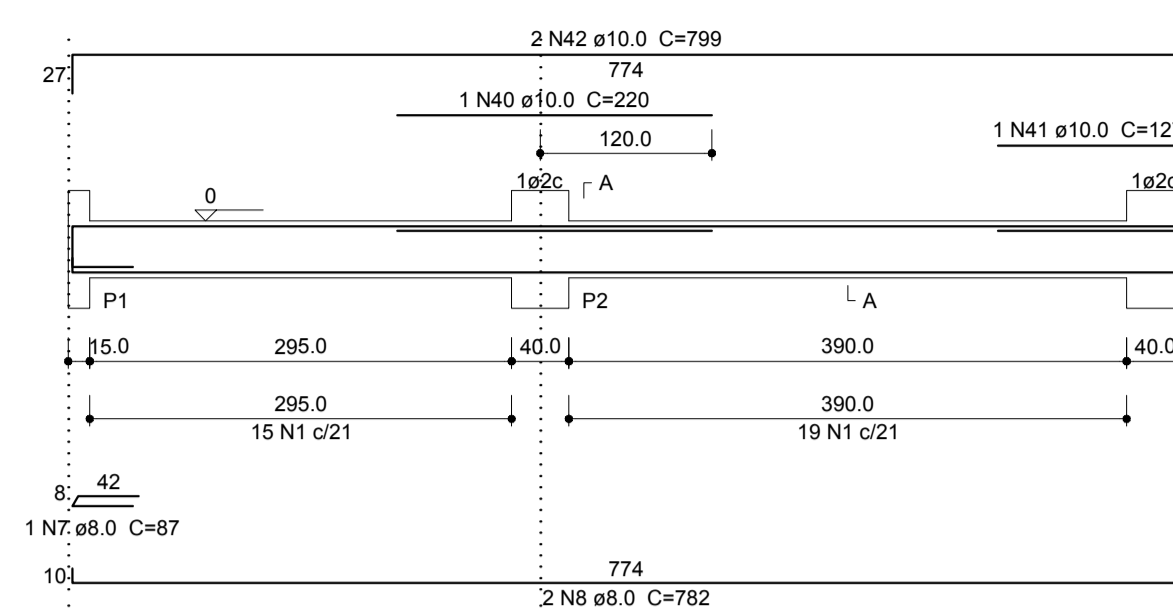
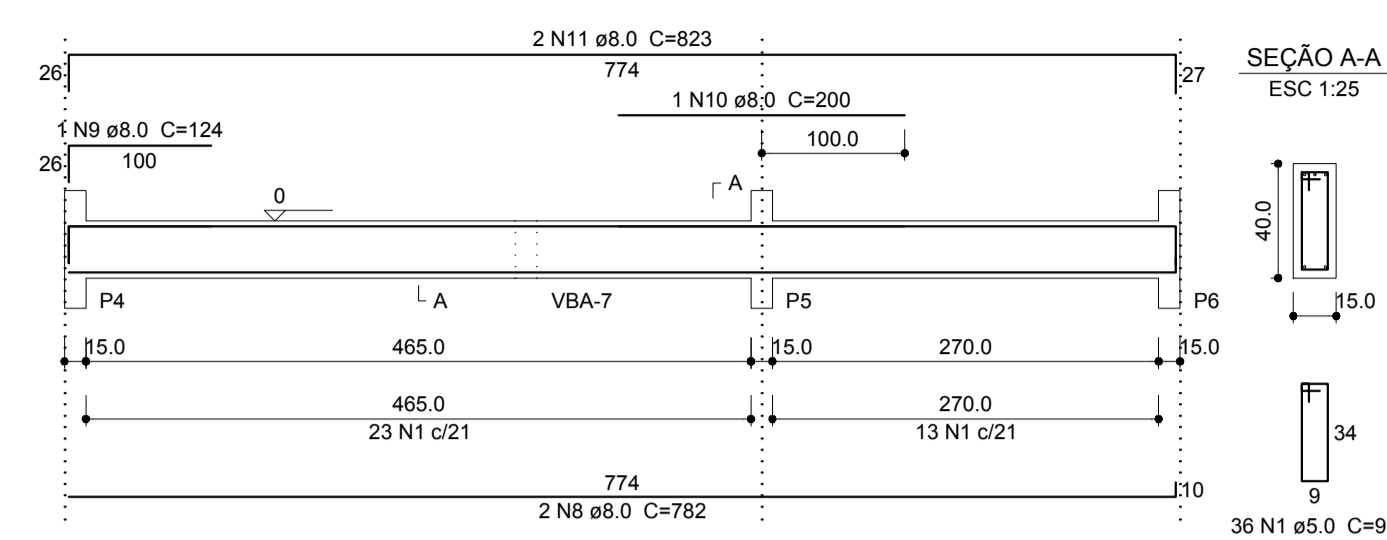


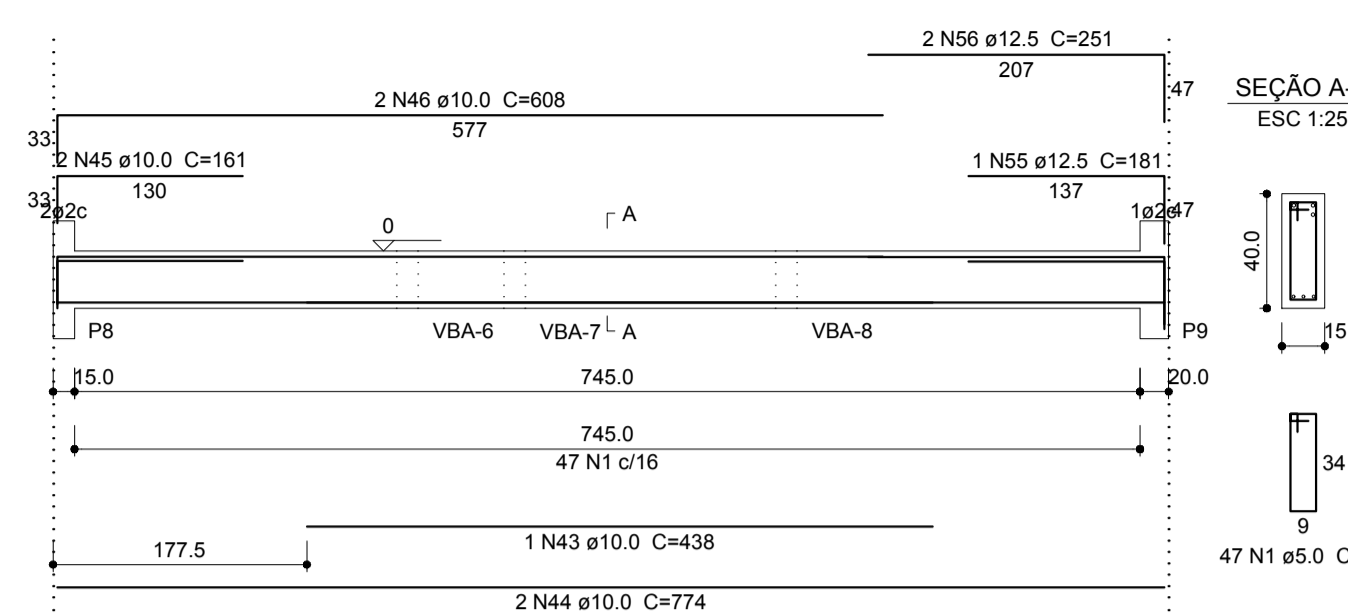
**VBA-1**  
ESC 1:50



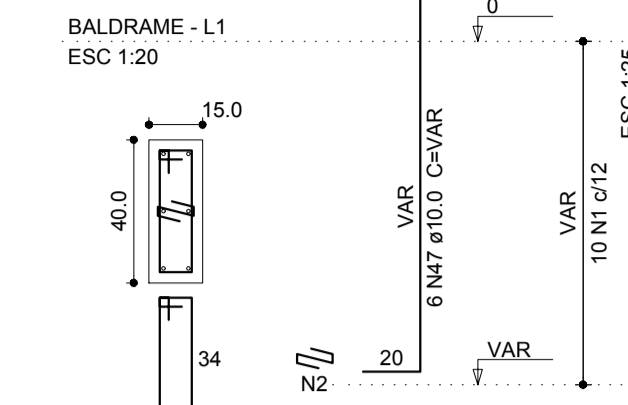
**VBA-2**  
ESC 1:50



**VBA-3**  
ESC 1:50



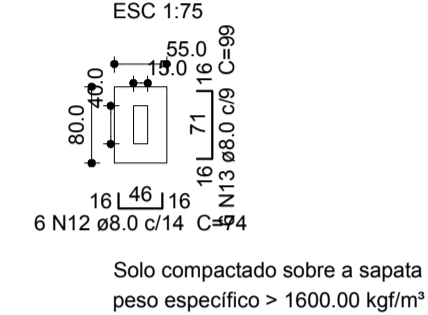
**P10=P13**  
BALDRAME - L1  
ESC 1:20



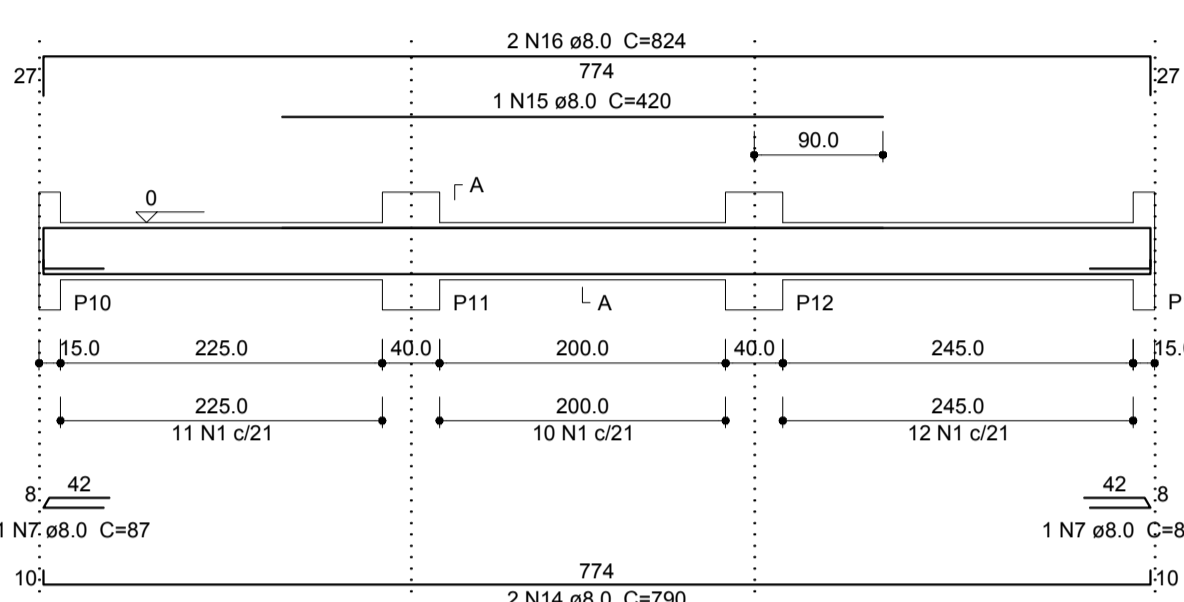
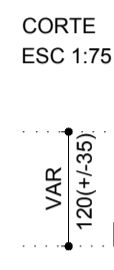
**Relação do aço**

DIAM (mm)	QUANT	C.UNIT (cm)	C.TOTAL (cm)
5.0	399	98	39102
5.0	90	24	2160
5.0	10	118	1180
5.0	34	340	340
5.0	10	108	1080
5.0	10	230	230
5.0	8	87	261
8.0	4	782	3128
8.0	1	124	124
8.0	1	200	200
8.0	2	823	1646
8.0	12	74	888
8.0	20	99	1980
8.0	2	790	1580
8.0	1	420	420
8.0	2	824	1648
8.0	6	1119	6714
8.0	1	185	185
8.0	1	470	470
8.0	1	490	490
8.0	2	295	590
8.0	6	339	2034
8.0	1	268	268
8.0	2	882	1764
8.0	2	287	574
8.0	2	210	420
8.0	2	523	1046
8.0	2	1147	2294
8.0	12	84	1008
8.0	21	109	2289
8.0	21	149	1490
8.0	18	119	2142
8.0	12	124	1488
8.0	6	124	744
8.0	12	134	1608
8.0	10	149	1490
8.0	7	129	903
8.0	14	139	1946
8.0	11	159	1749
8.0	1	220	220
10.0	1	127	127
10.0	2	799	1598
10.0	1	438	438
10.0	2	774	1548
10.0	2	161	322
10.0	2	608	1216
10.0	54	VAR	VAR
10.0	29	75	2175
10.0	6	148	888
10.0	6	VAR	VAR
10.0	3	VAR	VAR
10.0	3	VAR	VAR
10.0	13	148	1924
10.0	11	168	1848
12.5	1	181	181
12.5	2	251	502
16.0	1	280	280
16.0	2	931	1862

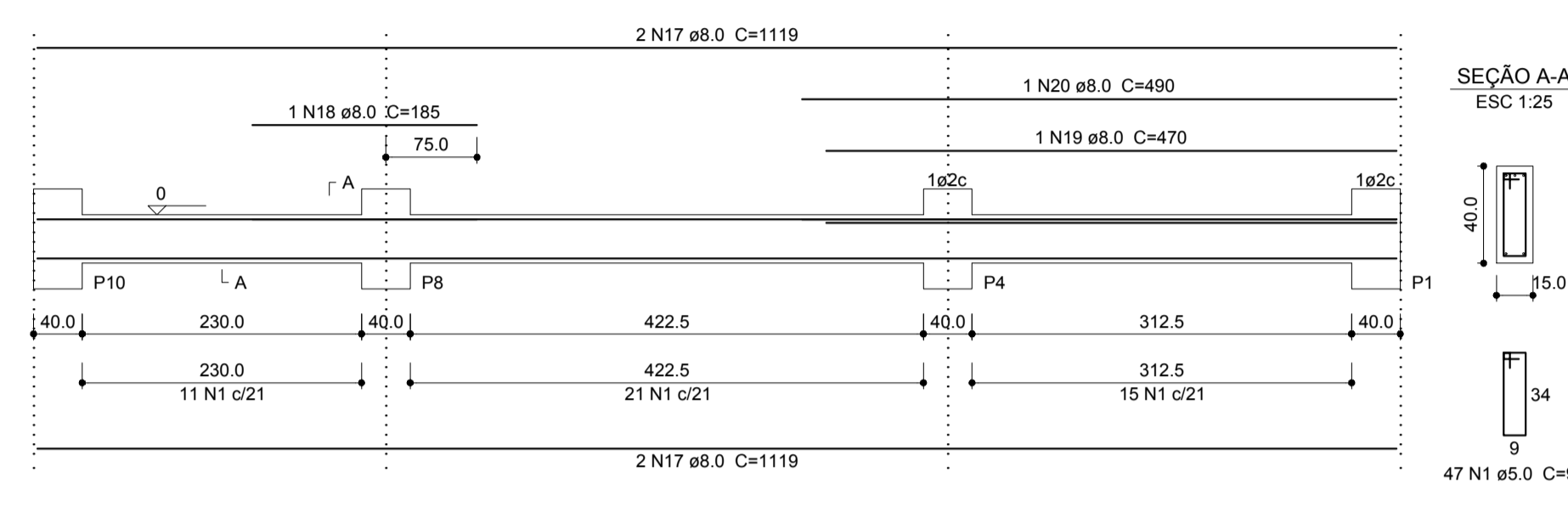
**S10=S13**  
PLANTA  
ESC 1:75



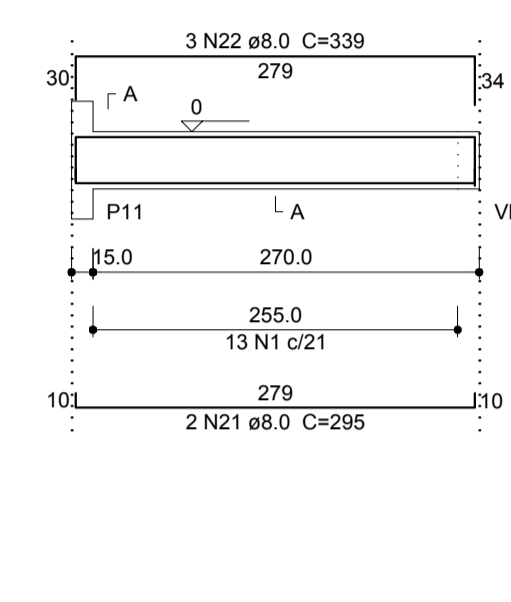
**VBA-4**  
ESC 1:50



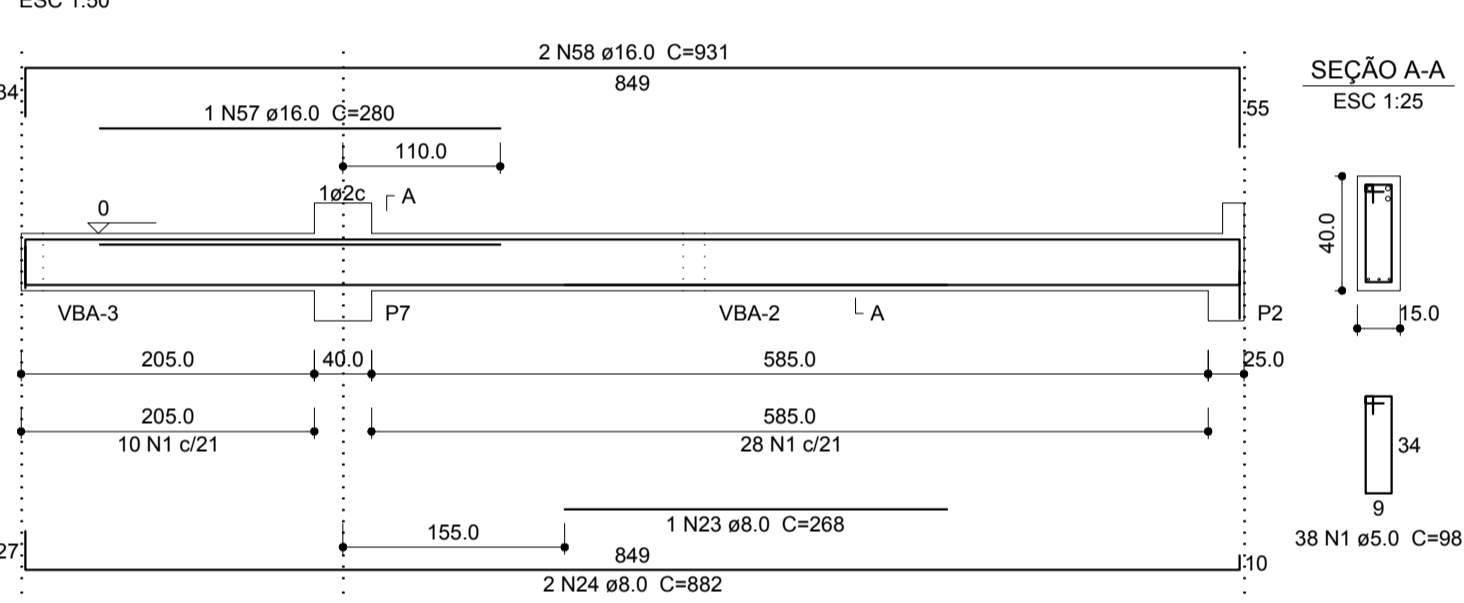
**VBA-5**  
ESC 1:50



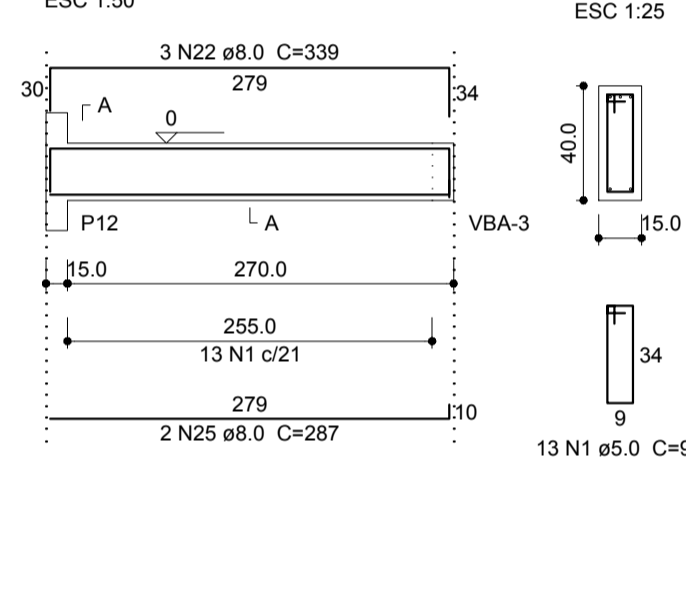
**VBA-6**  
ESC 1:50



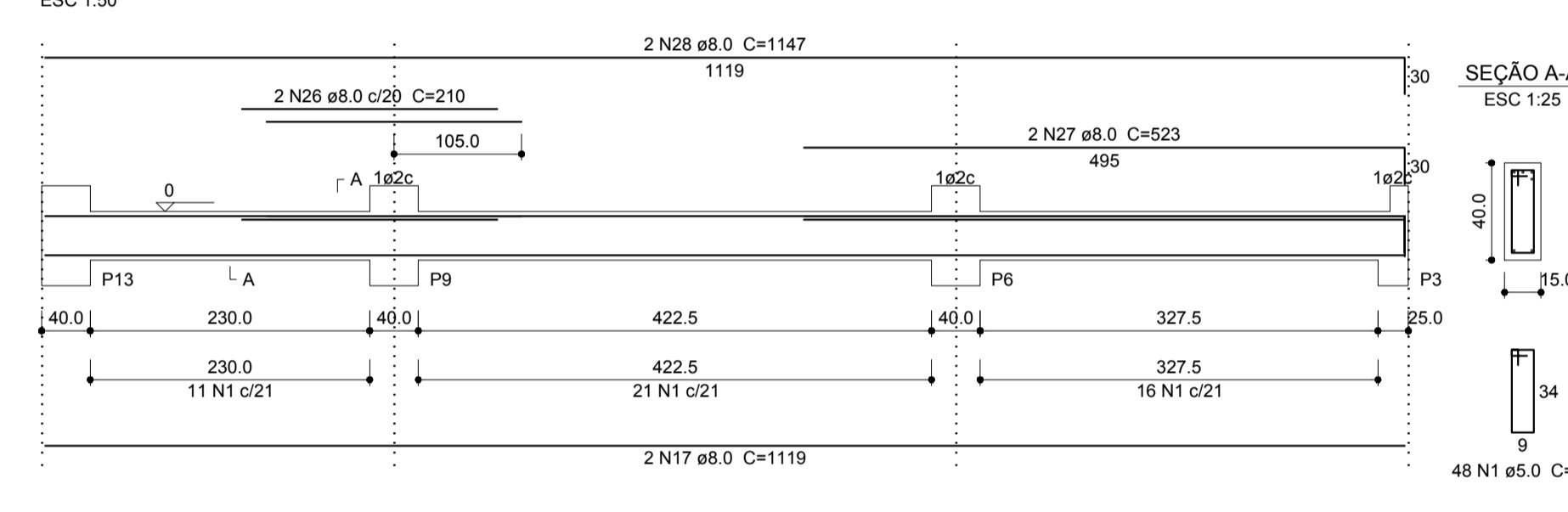
**VBA-7**  
ESC 1:50



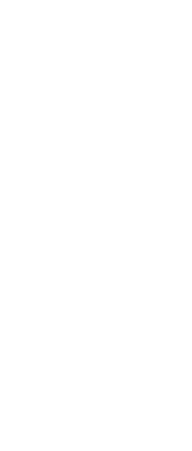
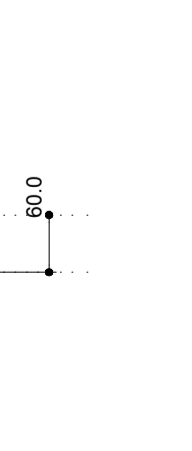
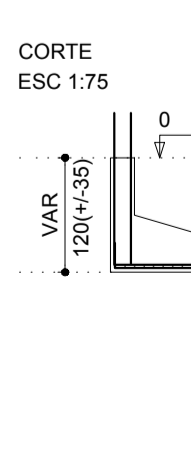
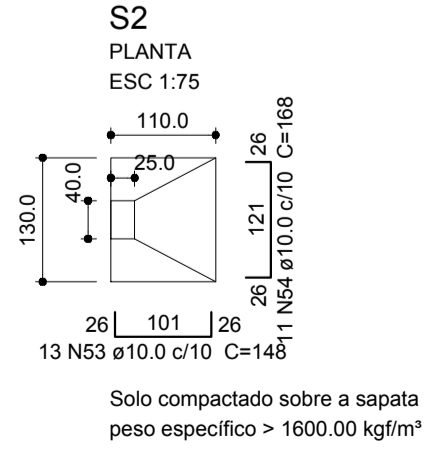
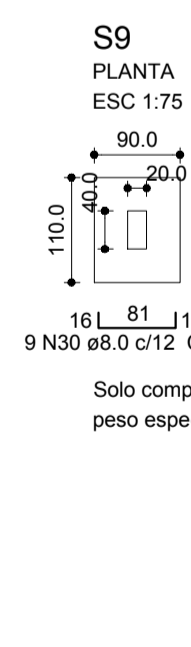
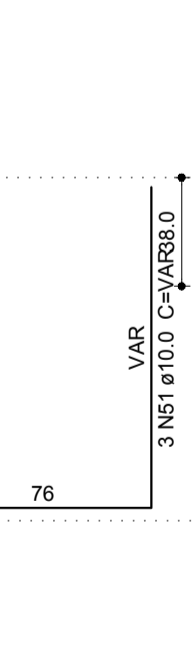
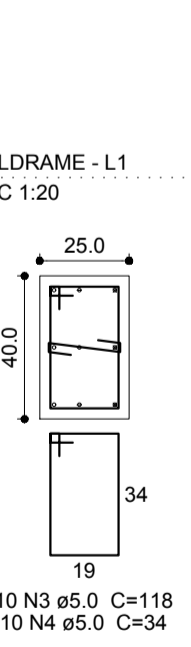
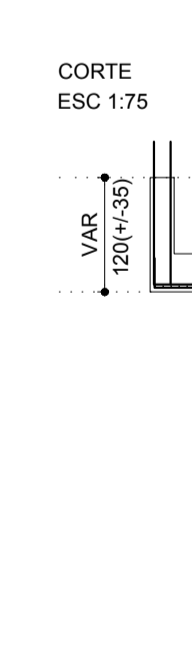
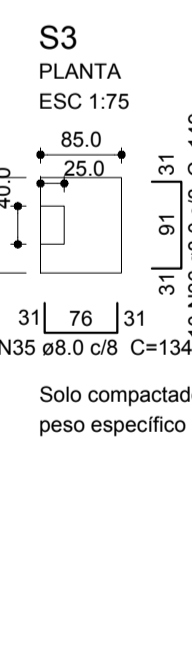
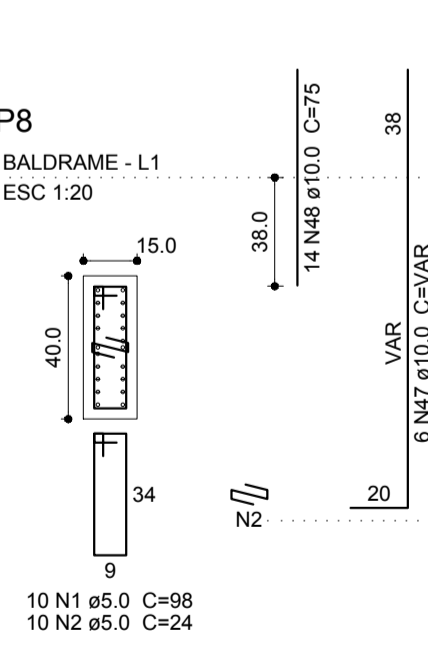
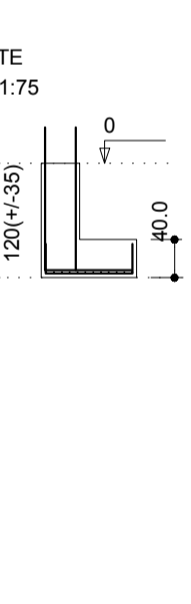
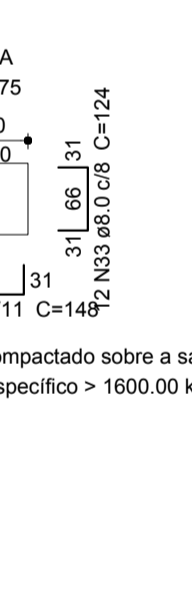
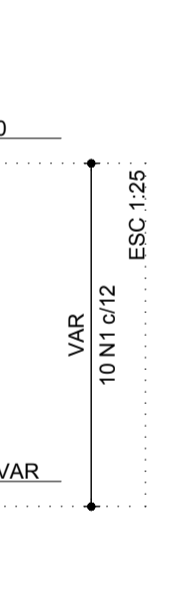
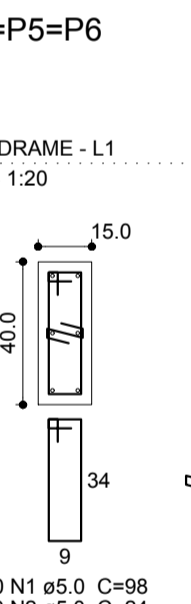
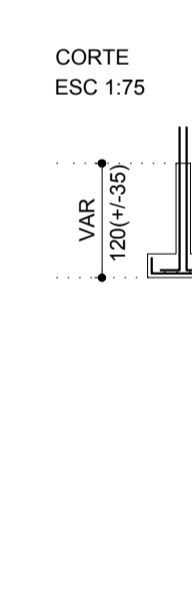
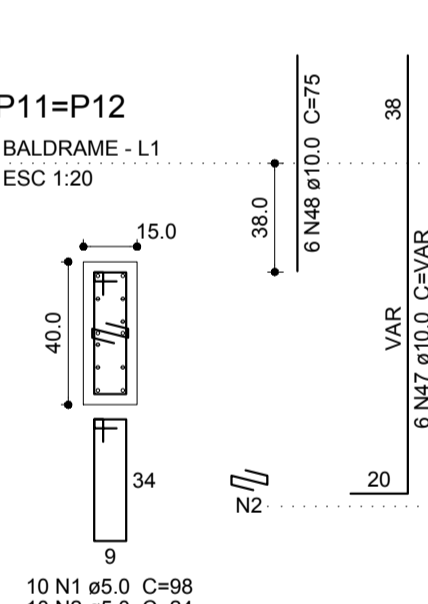
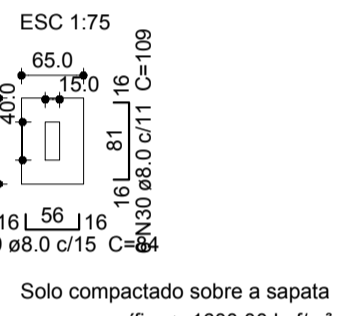
**VBA-8**  
ESC 1:50



**VBA-9**  
ESC 1:50



**S11=S12**  
PLANTA  
ESC 1:75



**PROJETO ESTRUTURAL**

**DETALHAMENTO**

Endereço: Av. Sidônio Otoni, 697  
Jardim Iracema - Teófilo Otoni-MG  
Proprietário: 15ª Cia PM Ind MAT  
Polícia Militar de Minas Gerais  
CNPJ.: 16.695.025/0001-97

Escalas: Indicadas  
Desenho: Outubro 2017  
Revisão: Out. 2017

PILAR MATERIAL DE CONSTRUÇÃO  
E LOCAÇÃO DE MÁQUINAS  
EIRELI-ME

KAYCK ALVES MOREIRA  
ENR. CIVIL CREA-MG 214.465/LP  
Contato: (33) 3521-2709

Desenho: 02  
Folha: 02/04

Data: 28/10/2017